

The background is a traditional Chinese ink wash painting. It depicts a misty mountain landscape with several tall, slender pine trees in the foreground and middle ground. In the lower right corner, two deer are shown standing on a rocky outcrop. The painting uses varying ink tones and brushwork to create texture and depth. The overall style is characteristic of classical Chinese landscape art.

The Origins and History of Traditional Chinese Painting and its Contribution to Society and Health

Richard Guan
关瑞之

October 3, 2017

乙酉

瑞之



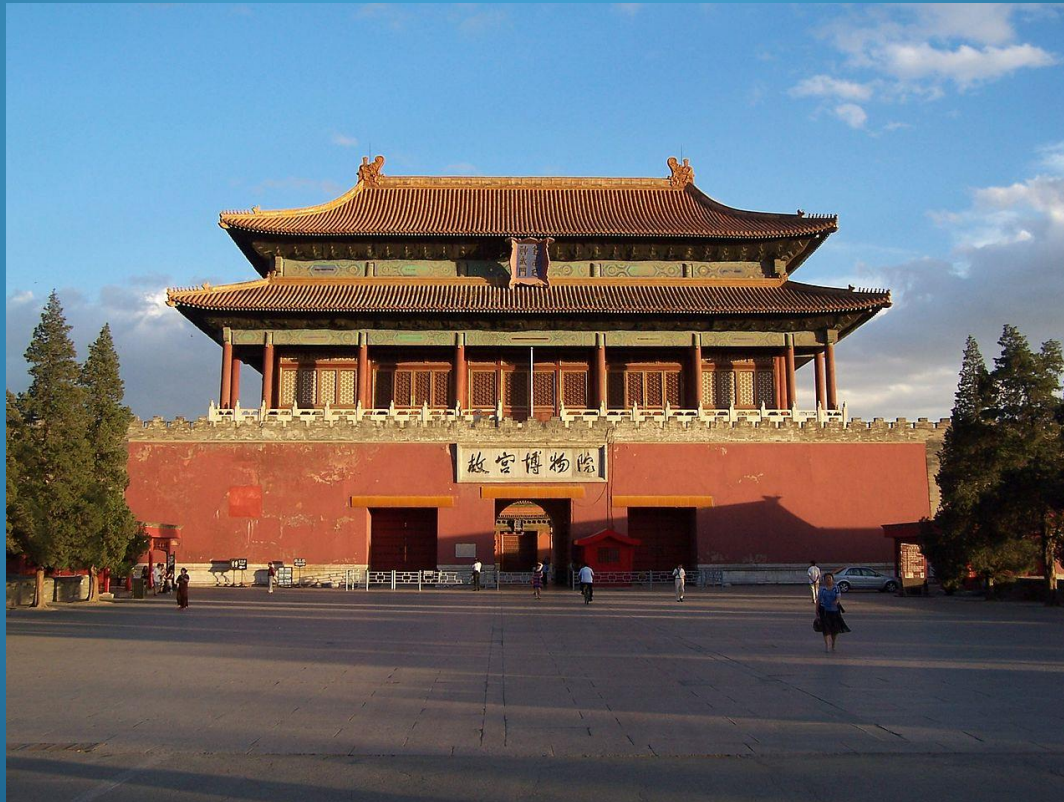
Summary

A 90-minute talk about Chinese Painting

- 30 minute lecture in English. We will discuss about the 'Why', explaining the relationship between traditional Chinese painting, nature, and society.
- 60 minute lecture in Chinese. We will understand the 'How', taking a closer look at the unique form of Chinese painting, its underlying theories and brushstroke technique.

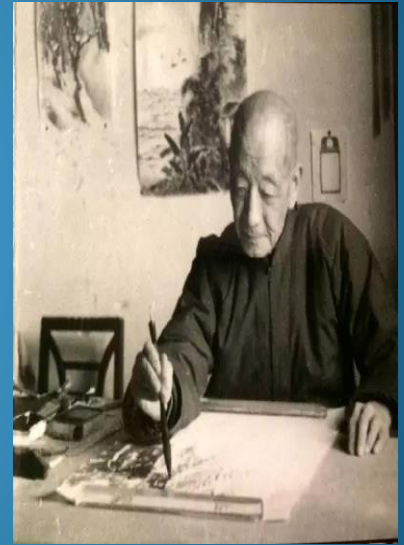
Self-Introduction

- The Forbidden City and the Imperial Painting Style

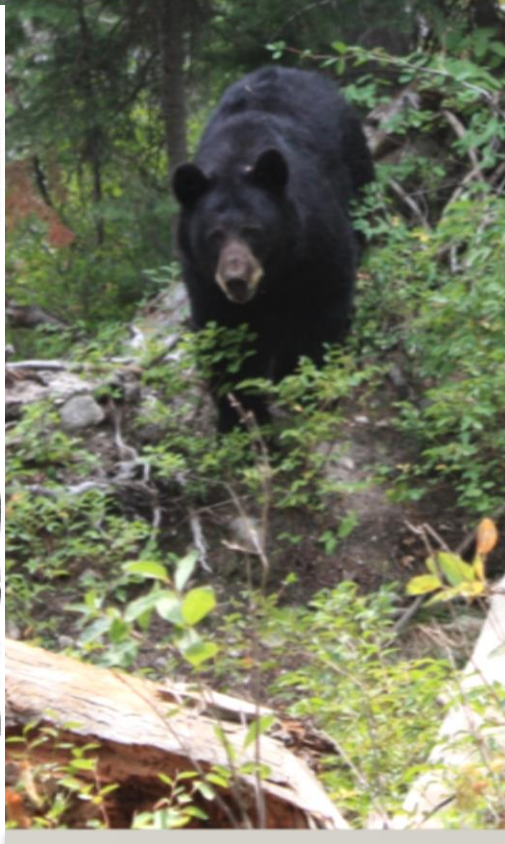
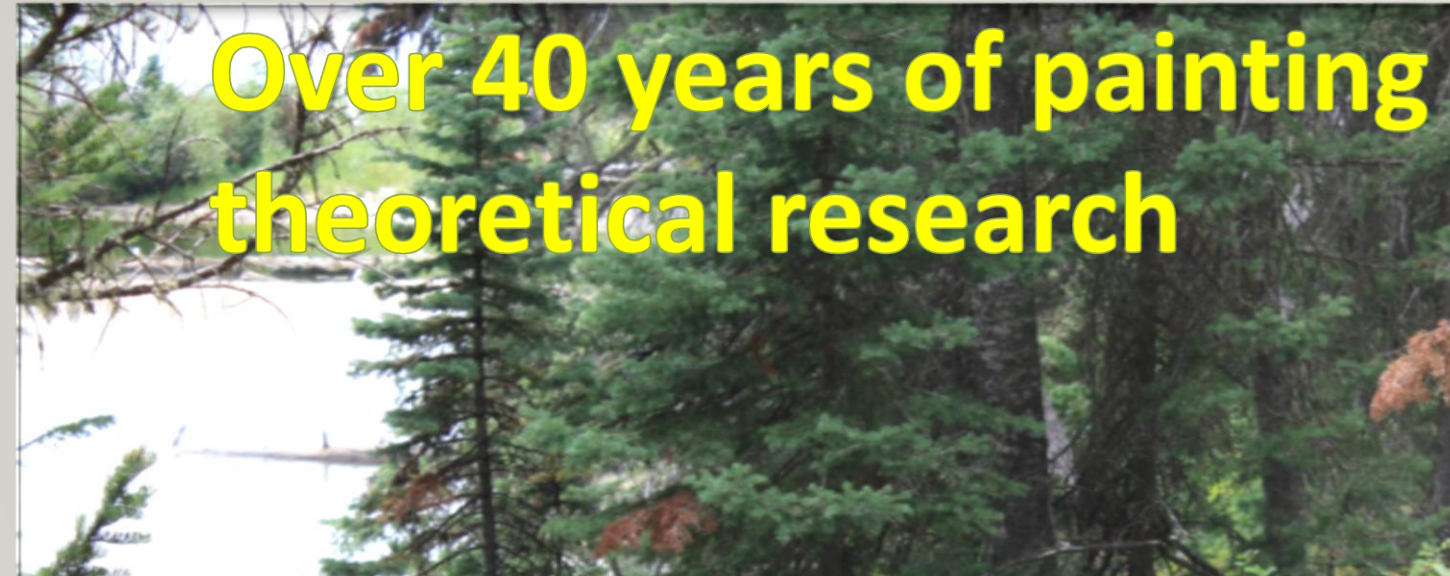


Self-Introduction

- **Song-Feng Artist Guild**



Over 40 years of painting and theoretical research



2. Concepts of Chinese Painting

- Chinese fine art and Chinese painting
- Classifications of Chinese fine art: Rock Wall Paintings, Color & Ink Paintings, Ink Paintings.



Concepts of Chinese Painting

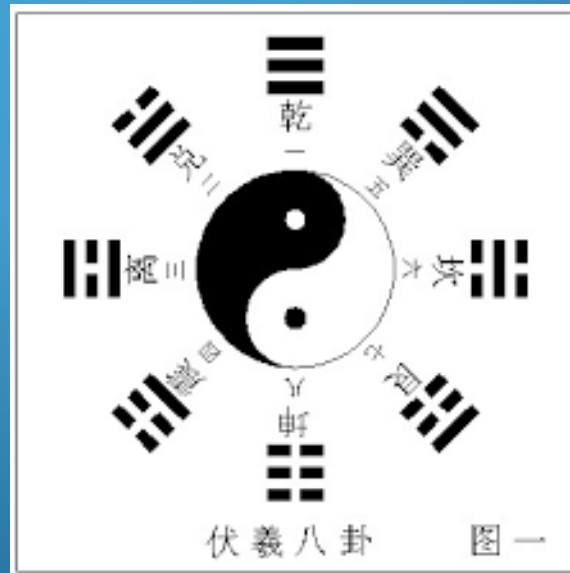
- Ink Painting has gained world reputation



3. Origins of Chinese Painting

from the understanding of nature to the utilization of it

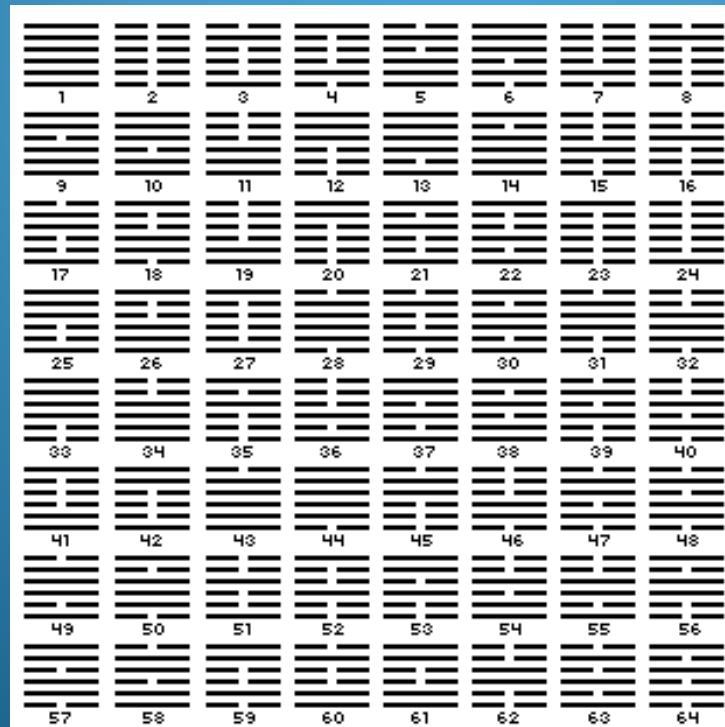
- Rock Wall Painting period: Fuxi and his Eight Trigrams in Paleolithic times. 1,000,000~10,000 BC



FengShui
风水

Origins of Chinese Painting

- Color & Ink Painting period: King Wen of Zhou dynasty and his 64 hexagrams (The King Wen Sequence). 1100 BC~ AD 23



I Ching
易经

Origins of Chinese Painting

- Ink Painting period: Paper as one of the four major Chinese inventions. AD 25 ~ Current.



Cai, ~121

4. Content and Artistic Conception

- **Rock Wall Painting:**

A description of a subject without relationship.



Content and Artistic Conception

- Color & Ink painting:

Connect a single subject to related subjects.

Nature is used as a reference for life.

Based on traditional Chinese acupuncture, man's inner circulation is connected with Tian Shi, a FengShui term with much deeper meanings. (Yellow Emperor's Inner Cannon)



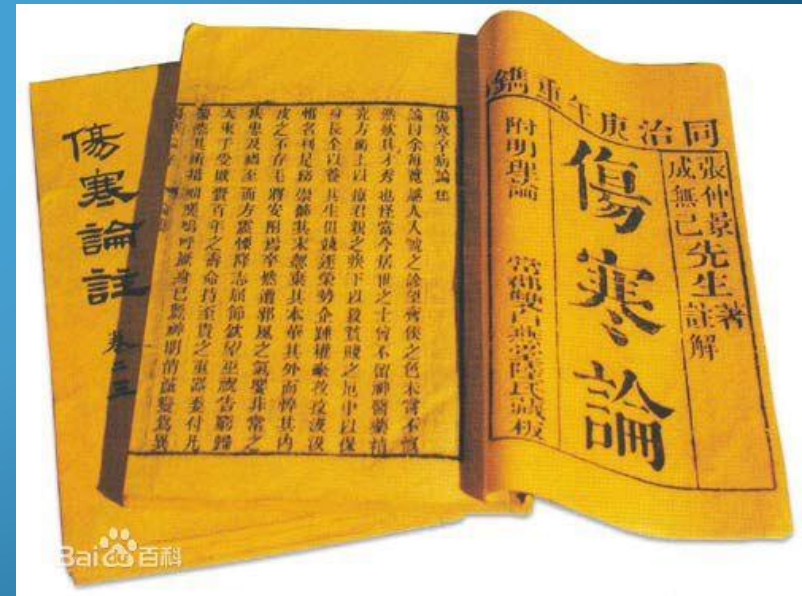
Content and Artistic Conception

- Ink Painting:

Depicts relationships and the abstraction of related subjects.

Nature is used as a resource for life.

The emergence of the first pharmacopoeia "Treatise on Cold Damage". The correlation of man and herbs.



**5. Contributions of Chinese Painting
to Mankind
(Illustrated with Yuan Dynasty
Paintings)**

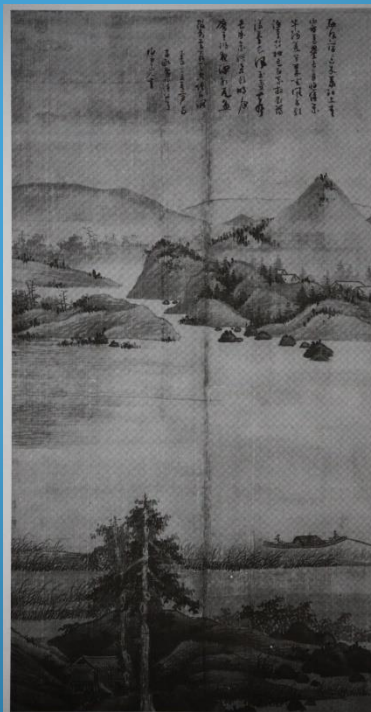
Contribution to the living environment

- The Famous Four landscape painters in Yuan Dynasty. Their artworks were about man with heaven and earth.



164. Wang Meng, *Gu Zhihuai Moving Hill Dwelling*, hanging scroll, ink and color on paper, ca. 1360s. 139 × 38 cm. Palace Museum, Beijing.

Wang, 1308~1385



148. Wu Zhen, *Fisherwoman*, hanging scroll, ink on silk, 1342.

Wu, 1280~1354



161. Ni Zan, *The Rongqi Studio*, hanging scroll, ink on paper, 1372. 74.7 × 31.5 cm. National Palace Museum, Taipei.

Ni, 1301~1374

Contribution to a healthy environment

- The essence of Chinese Taoism on healthy living: breathing.



Contribution to a healthy environment

- Chinese painting requires QiYun (Chi):
 - Guiding your breathing rhythm;
 - Types of breathing: surrounding walls and penetrating walls.
 - Manage yourself and the universe, the room, the building, and the environment.

Huang Gongwang, 1269~1354
Dwelling in Fuchun Mountains





The Meditation Function of Chinese Ink Painting

Illustration of a landscape painting and a piece of literati painting from the Yuan Dynasty



Zhao, 1254~1322



Wang, 1308~1385

163. Wang Meng, *Ge Zhiqian Moving His Dwelling*, hanging scroll, ink and color on paper, ca. 1360s. 139 × 58 cm. Palace

Illustration of a Literati painting for the current IT industry (Eye movement and breathing)



蘭

新春快乐 花开富贵
阖家幸福 万事如意



恭賀新禧

蘭香多生意



Contribution to the Social Environment

Illustrate the social environment of Yuan Dynasty and the birth of Chinese Literati Painting



Zheng , 1241~1318



Zhang, 1898~1982

A panoramic view of the Chicago skyline at sunset. The sky is a mix of orange, pink, and blue. The city lights are beginning to glow, and the Chicago River is visible in the foreground. The text 'Part I' is overlaid in the upper center.

Part I

End

Thank You!